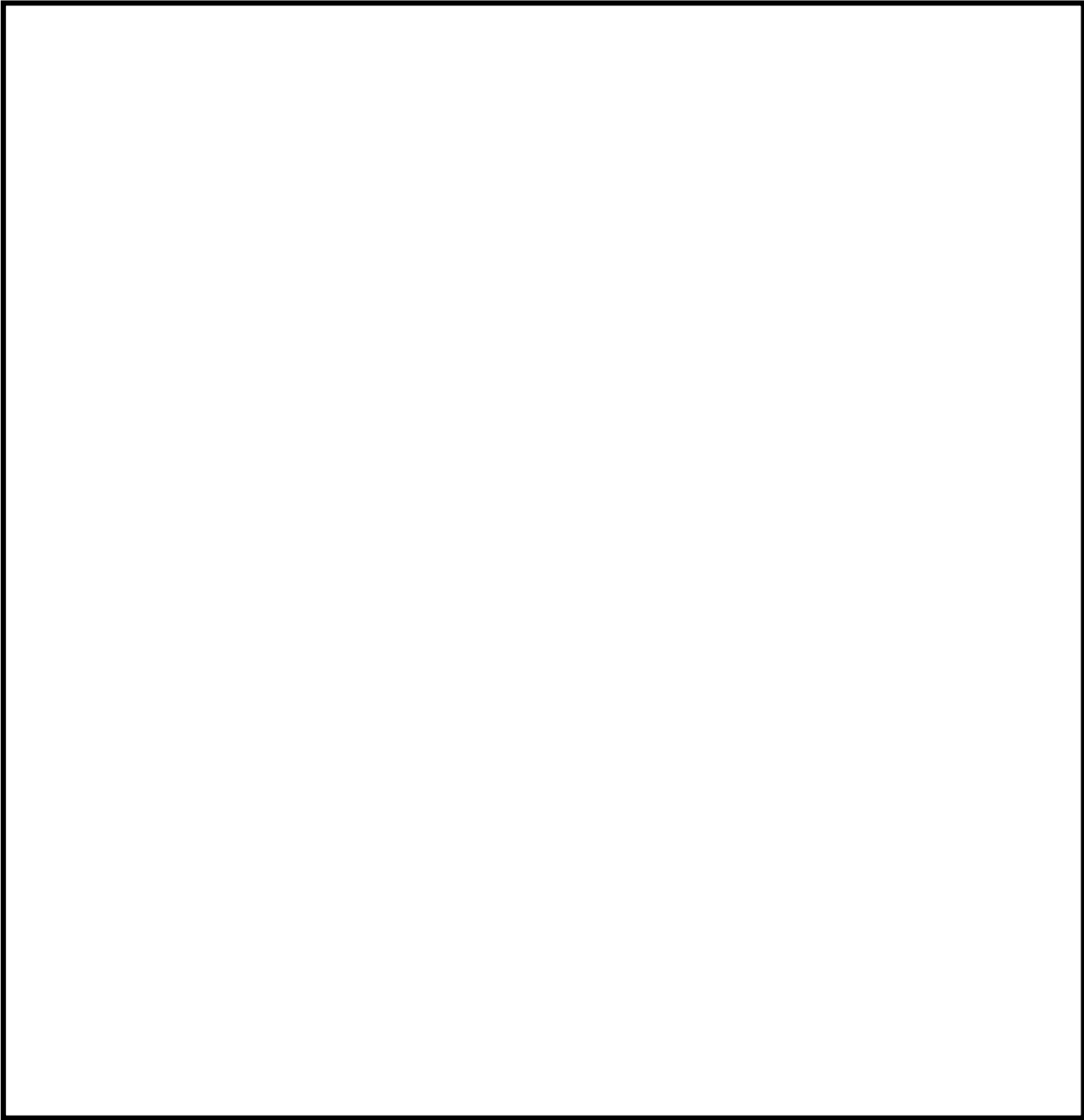


PPHS SENIOR PARKING SPOT PAINTING

The design sheet must be done in color and must represent exactly what will be painted.

Please use the box below to draw your parking space design for approval. Remember to start your design a MINIMUM of 4 inches from the white parking line. You may use another sheet of paper for your drawing or create and print a computer sketch.

A large, empty rectangular box with a black border, intended for a student to draw their parking space design. The box is centered on the page and occupies most of the middle section.

Student Name _____ Spot # _____

This is available to all Pinellas Park Seniors. **The painting fee is \$30.00.** Students will have the opportunity to personalize their assigned parking space. Please understand that this spot is only yours during the regular school day. Your spot will be available for anyone to park in after school hours, which includes after school activities (sports practices, games, club meetings, banquets, dances, or other events.)

IMPORTANT DATES, TIMES and GUIDELINES

Thursday, August 6th 7am-Noon – Arrive anytime between 7am and 11pm with your design sheet and \$25.00, ready to paint your base coat. Your base coat must be 4” from the white parking space line. A tape outline will be provided for you.

Your base coat must be done by NOON.

Friday, August 7th 7am-Noon – Arrive with enough time to paint your design on your base coat. **DESIGNS MUST BE COMPLETE BY NOON.**

On the final painting day, if a spot contains anything inappropriate or is not what was submitted on the sketch form, the parking space will be painted white and taken away from the student with NO REFUND.

GUIDELINES FOR DESIGN

The design must be school appropriate. Anything that violates dress code, is vulgar, or contains inappropriate references will NOT be approved. This includes, but is not limited to: profanity, gang/drugs/alcohol references, promotion of missing school, displays of violence, etc. Choose something that represents you, is appropriate, and uplifting. Remember to have fun!

PAINT REQUIREMENTS

Students are responsible for providing their own paint and materials necessary to complete the personalization of their parking spots. The only paint permitted to use for the spots is WATER BASED EXTERIOR LATEX. Students paint will be checked upon arrival for painting day and if it doesn't meet the paint requirements, the student will not be allowed to continue with the project. Tape will be on each parking space around the border to ensure each student stays within their parking space when painting.

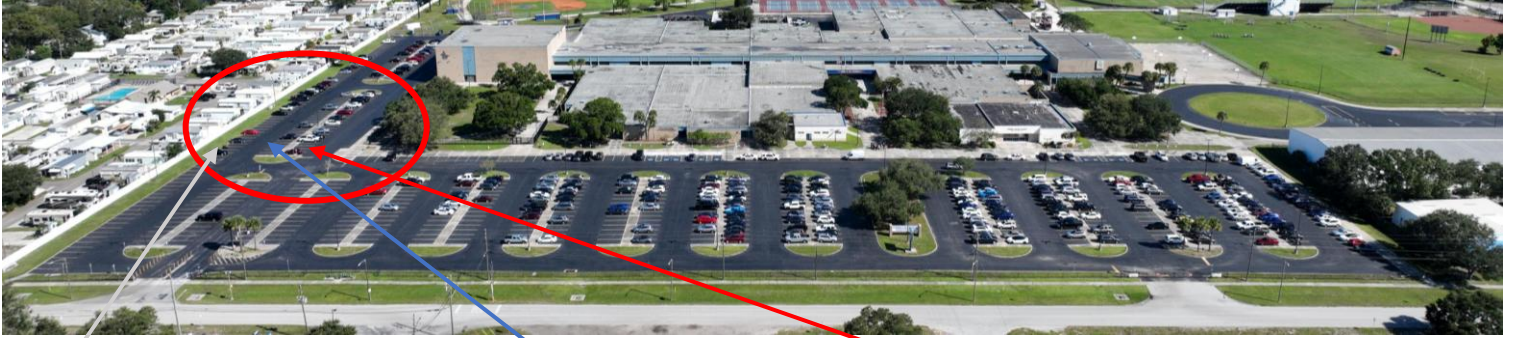
PAINT **NOT** PERMITTED: oil-based paints, spray paint, paint sprayers, reflective paint, fluorescent paint, and clear coats.

MATERIALS NEEDED

Students will be responsible for bringing the following materials:

ROLLERS and PAINT BRUSHES – PAINT PANS – PAINT – ITEMS FOR COMFORT (i.e. WATER, TENT, CHAIRS, SNACKS, SUNSCREEN, HATS, GLASSES, etc) – Any other tools needed for your design.

SPACES AVAILABLE



ROW 3 Fence Line Spaces

| |
|----|
| 47 |
| 48 |
| 49 |
| 50 |
| 51 |
| 52 |
| 53 |
| 54 |
| 55 |
| 56 |
| 57 |
| 58 |
| 59 |
| 60 |
| 61 |
| 62 |
| 63 |
| 64 |
| 65 |
| 66 |
| 67 |
| 68 |
| 69 |
| 70 |

ROW 2 Center Row

| |
|----|
| 24 |
| 25 |
| 26 |
| 27 |
| 28 |
| 29 |
| 30 |
| 31 |
| 32 |
| 33 |
| 34 |
| 35 |
| 36 |
| 37 |
| 38 |
| 39 |
| 40 |
| 41 |
| 42 |
| 43 |
| 44 |
| 45 |
| 46 |

ROW 1 Spaces closest to courtyard.

| |
|----|
| 1 |
| 2 |
| 3 |
| 4 |
| 5 |
| 6 |
| 7 |
| 8 |
| 9 |
| 10 |
| 11 |
| 12 |
| 13 |
| 14 |
| 15 |
| 16 |
| 17 |
| 18 |
| 19 |
| 20 |
| 21 |
| 22 |
| 23 |